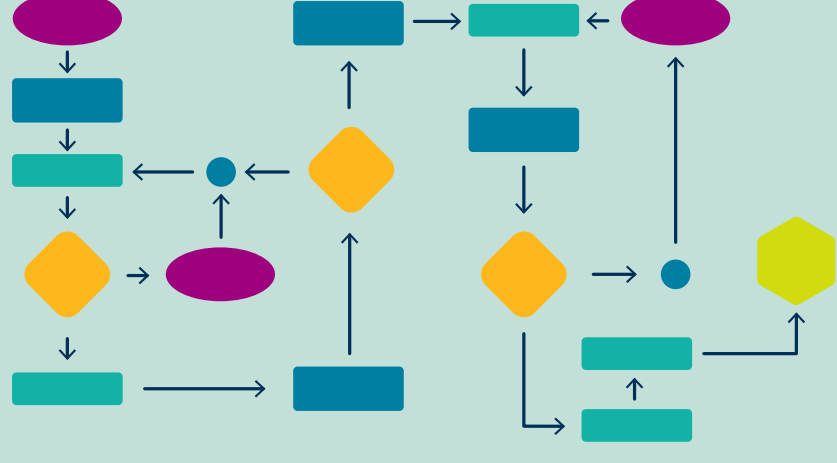


Building an ASSESSMENT

Building an assessment is a lot like assembling a puzzle—many different parts must fit together so students, teachers, and parents can see a clear picture of academic achievement.

That's why experts use a multi-step process to create an assessment.



Blueprint.

It starts with a blueprint developed by state leaders and educators about what students need to learn.

Test Question Development.

Then, a team of specialists and former teachers create potential assessment questions. These questions are the pieces of the puzzle.



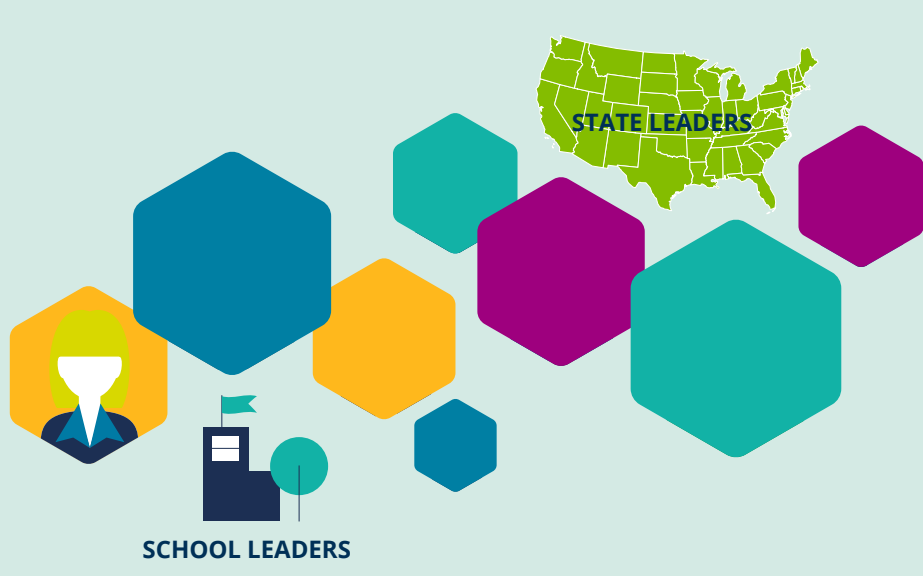
Test Question Reviews.

More experts review the content. Are questions too easy or too hard? Are they grade appropriate?



Local Test Question Reviews.

During the process, leaders from states and schools weigh in.



Reviews for Bias and other Factors.

Learning experts review the questions to ensure they are unbiased and assess students properly.



Field Testing.

These become the first version of the puzzle, which is then tested in the field. These questions don't count toward students' final scores, but provide valuable information back to experts about the quality of the question.



Data Review of Test Question.

The questions are again reviewed for quality, validity, and fairness—Over as many as 18 months.



Test Day.

Only when the questions pass all the reviews do they make it onto an actual test—but the work to complete the puzzle does not end on test day.



Scoring.

Trained evaluators score each question.



Score Review and Validation.

And even more scientists pour over the results to help understand if learning is on track.



Reporting.

All their work is pulled together in reports to states, school districts, and families.



This last step of the process gives an important snapshot for parents and teachers, and it's what makes assessments an important part of helping children grow and learn.

