

# Statewide Assessments: Using Preliminary Results

MCA, MTAS, ACCESS and Alternate ACCESS



Preliminary results for the MCA and MTAS are ***immediate***.

- Available within 60 minutes.
- ACCESS and Alternate ACCESS preliminary results are available in early June.



These results provide ***general information*** about student learning of the standards.

- Can be shared with students, families and teachers
- Not final; cannot be shared publicly

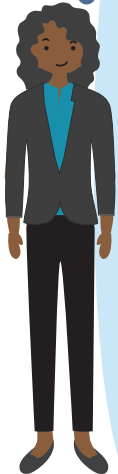


Use these results in ***context***:

- How did changes in your instructional schedule and learning mode affect student learning?
- What additional evidence can you consider, like attendance or family surveys?

For all tests, it is recommended to wait until summer when summarized test results are available to make decisions about curriculum and instruction.

For ACCESS, preliminary results can be used to make individual student reclassification and exiting decisions.



During the 2020–21 school year, educators and students experienced significant and profound changes in teaching and learning, as well as social and emotional well-being.

It is important to keep this in mind when interpreting assessment results, as these changes are reflected in student scores but are difficult to account for accurately.

## Monitor Implementation of Standards

- The standards define the expectations for student learning and instruction.
- Statewide assessments are a snapshot of student learning of the standards.
- Public schools and districts use these results as one part of their comprehensive assessment system.

## Prioritize Equity

- Information from a comprehensive assessment system can be used as a guide to ensure every student receives a high-quality education, no matter their race or ZIP code.
- Statewide assessments results can be used to look across student groups, schools, and districts to identify underlying inequities and highlight promising instructional practices.

## Provide Valid Results

- Minnesota educators and community members are involved in multiple steps of test development and are critical partners in this work.
- There are rigorous checks and validations of results prior to reporting.
- Both of these ensure that statewide assessment results are a valid and reliable measure of learning of the standards at the time students test.

## Questions?

Contact Academic Standards, Instruction and Assessment at [mde.testing@state.mn.us](mailto:mde.testing@state.mn.us)