

Appropriate and Inappropriate Uses of ACCESS for ELLs Results

Appropriate



Use individual student results to guide English Language Development (ELD) instruction

Why: To support English Learners (ELs) in developing the English language skills needed to fully participate in the classroom



Compare results across student groups

Why: To help determine where there may be underlying inequities and highlight promising instructional practices



Monitor individual student progress

Why: To inform EL reclassification and exiting decisions



Use domain-specific or composite scale scores to calculate individual student growth

Why: To look at individual progress over time since the domain and composite scores use the same scale across grade levels



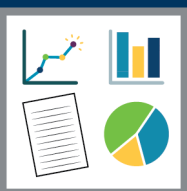
Look at proficiency levels for a grade, school and/or district

Why: To monitor progress in learning academic English, as described by the WIDA ELD Standards



Look at proficiency levels over time for student groups, grades, schools and/or the district

Why: To support the evaluation of ELD instruction and general content instruction



Use as one of multiple data points for school and district decision-making

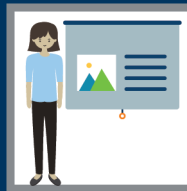
Why: To strengthen the decision-making process by using multiple pieces of evidence

Inappropriate



Use Reading ACCESS scores in place of Reading MCA scores

For example: Using Reading ACCESS scores to look at mastery of English language arts standards



Use as a mandatory indicator for program placement

For example: Making decisions about gifted and talented programming or rigorous course taking



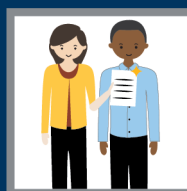
Compare scale scores across domains

For example: Comparing a 350 in Speaking to a 350 in Writing when they are not equivalent



Compare percent of students proficient over time or across schools

For example: Expecting proficiency rates to rise, even though proficient ELs are exited



Use in isolation to evaluate teacher effectiveness

For example: Only using ACCESS scores and no local considerations or data

Questions?

Contact Academic Standards, Instruction and Assessment at mde.testing@state.mn.us.